

# PENTHOUSE 2<sub>A</sub>

3 BEDROOMS | 2 BATHROOMS | 1 POWDER ROOM

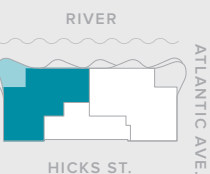
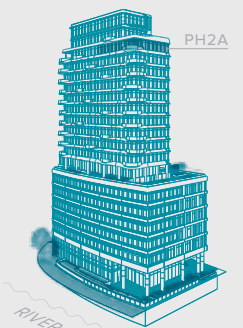
INTERIOR: 1,932 SQFT | 179.49 SQM

EXTERIOR: 307 SQFT | 28.52 SQM

350 HICKS STREET, BROOKLYN, NY 11201

[1RIVERPARKBROOKLYN.COM](http://1RIVERPARKBROOKLYN.COM)

Furnishings and outdoor furniture in these materials are not included in the offering and are for illustrative purposes only. The artist and computer renderings and interior decorations, finishes, fixtures, appliances, and furnishings are provided for illustrative purposes only but do reflect the planned scale and spirit of the building. Sponsor makes no representation or warranties except as may be set forth in the Offering Plan and reserves the right to make substitutions of material, equipment, fixtures, finishes, and appliances in accordance with the terms of the Offering Plan. Sponsor makes no representation as to the continued existence of any restaurant, store, museum, park, or other establishment named herein. All square footages and dimensions are approximate and subject to normal construction variances and tolerances. THE COMPLETE OFFERING TERMS ARE IN AN OFFERING PLAN AVAILABLE FROM THE SPONSOR. FILE # CD18-0331. Sponsor: FPG CH 350 Hicks, LLC, 45 Main Street, #800, Brooklyn, NY 11201. Equal Housing Opportunity.



SCALE 1 UNIT = 1 FOOT

